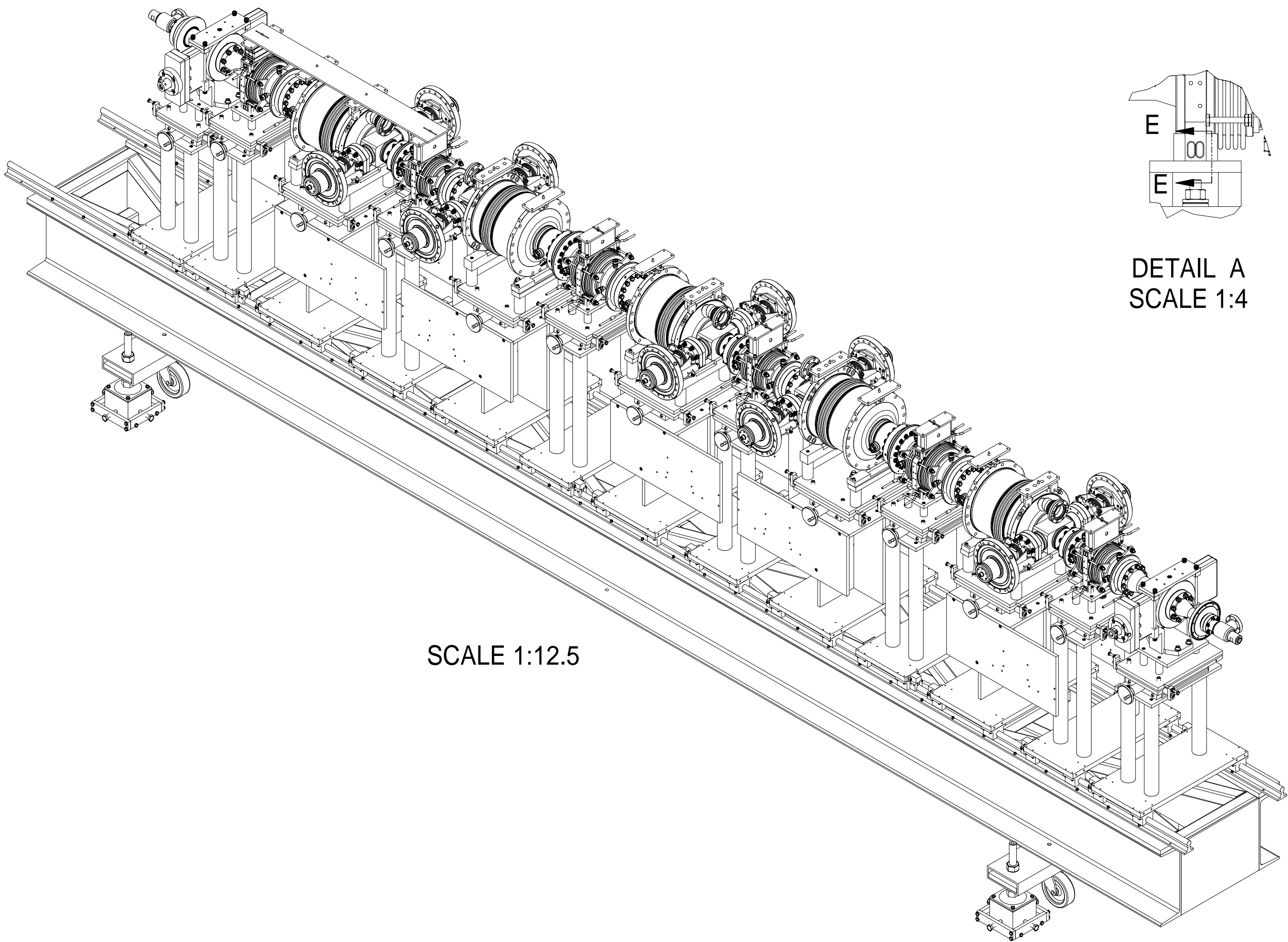
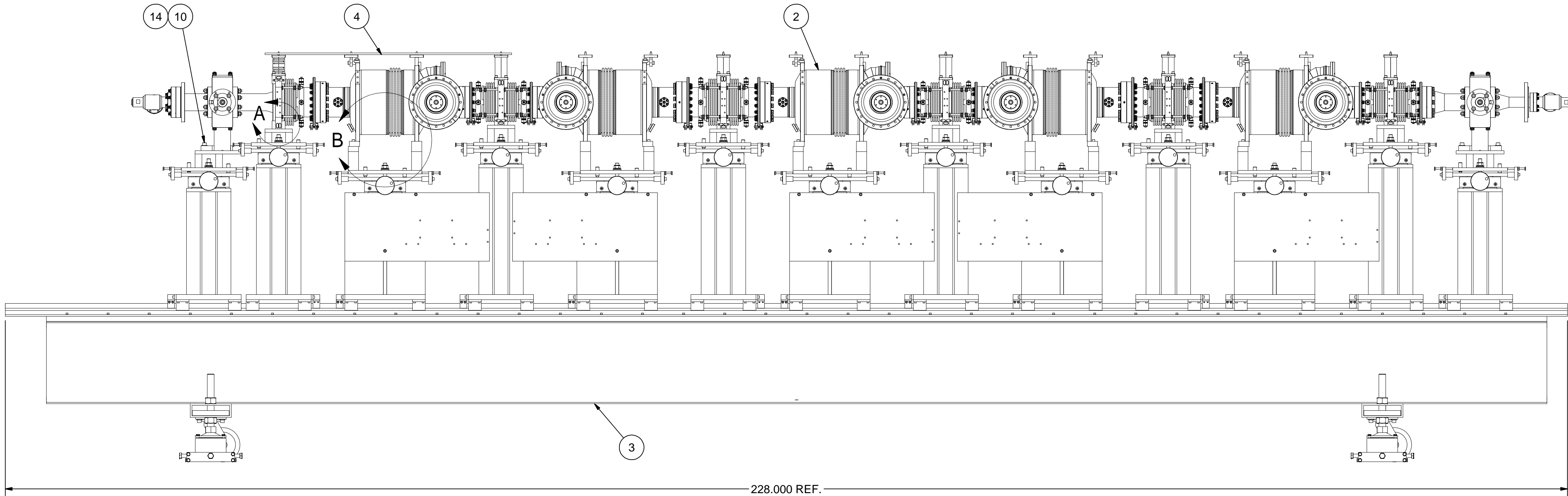
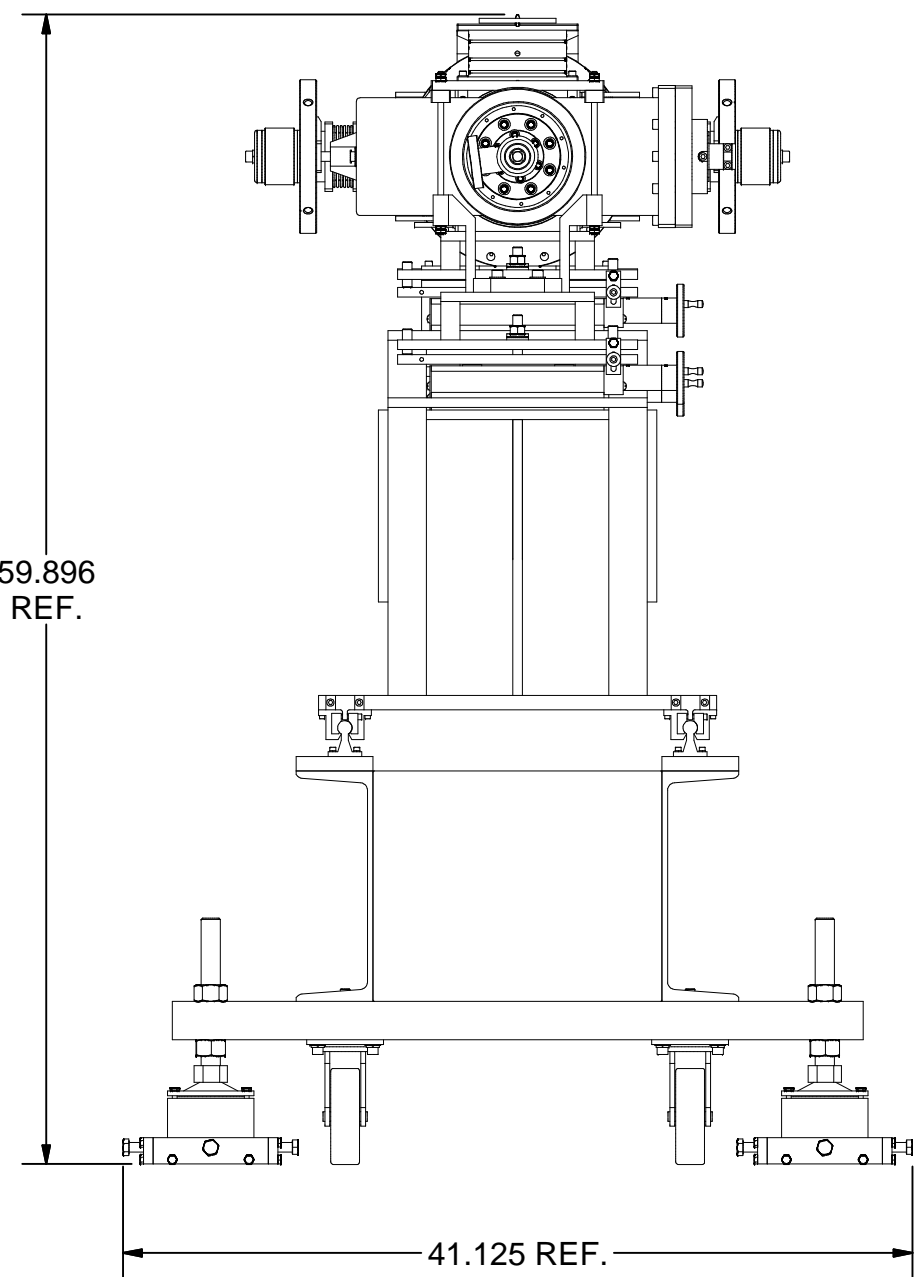
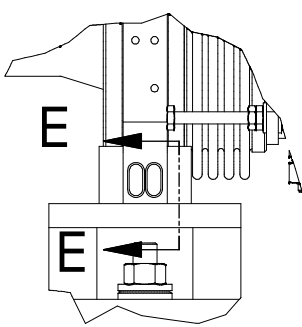


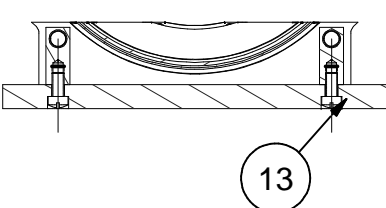
REVISIONS				
SYM.	ZONE	DESCRIPTION	DATE	APP.



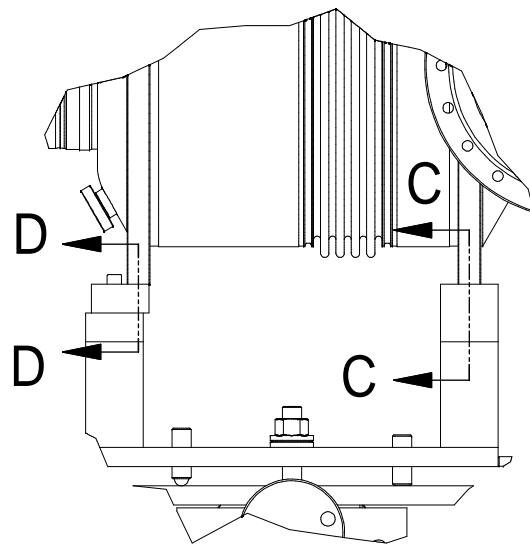
SCALE 1:12.5



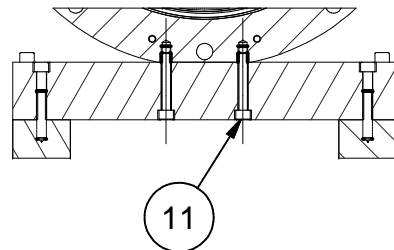
DETAIL A  
SCALE 1:4



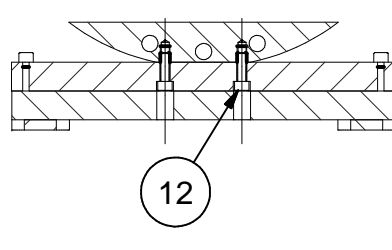
SECTION E-E  
SCALE 1:4



DETAIL B  
SCALE 1:5



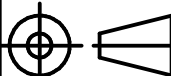

SECTION C-C  
SCALE 1:5



SECTION D-D  
SCALE 1:5

- 1 Beam Line Components and Clean Room Fixture Assembly, Step 0000
- FILE NAME: 7102-074  
SHEET NO.: 1  
DFT. SCALE: 1:10  
MATERIAL:  
QTY: 1 PER CRIOMODULE  
NOTES:

14	Purchased	3/8 SAE Washer, SS	8			McMaster-Carr's 96659A108	
13	Purchased	1/4-28x1/2 Fillister Head Machine Screw, Brass	24				
12	Purchased	1/4-28 x 3/4 Socket Head Cap Screw, SS	10			McMaster-Carr's 92196A321, or equiv.	
11	Purchased	1/4-28 x 1-1/2 Socket Head Cap Screw, SS	10			McMaster-Carr's 92196A329	
10	Purchased	3/8-24 x 1-1/4 Socket Head Cap Screw, SS	8			McMaster-Carr's 92196A361	
4	7110-014 (It.11)	Pin Spacing Template	1				
3	7102-071	Clean Room Assembly Fixture	1				
2	7102-073	Beam Line Components Assembly I, Step 000	1				
1	7102-074 (Sh.1)	Beam Line Components and Clean Room Fixture Assembly, Step 0000	X				

		ITEM	DWG. NO.	DESCRIPTION			G1	G2	G3	REMARKS		REV.	
								QUANTITY					
D	PRINT DISTR.	PLOT DATE: 12/11/2007 CAD FILE NAME: 7102-074.idw											
	CR-1	<div>UNLESS OTHERWISE SPECIFIED:  DIMENSIONS ARE IN INCHES: TOLERANCES ON: .0 ± .02 .00 ± .010 .000 ± .005 FRACTIONS ± 1/32 ANGLES ± 0.5° ALL SURFACES ✓</div>			<div><div><div>CORNELL UNIVERSITY</div><div></div><div>CORNELL UNIVERSITY Floyd R. Newman Laboratory Ithaca, NY 14853</div></div><div>ERL INJECTOR CRYOMODULE Beam Line Components and Clean Room Fixture Assembly, Step 0000</div></div>								
SH. NO. 1 OF 1	7102-074	CHECKED BY: VM		DRAWN BY		DRAWN FOR		DATE		SCALE	D	7102-074	REV.
REV.		APPROVED BY: VM		vm		J.Sears		12/5/07				SH. NO. 1 OF 1	